

Packet 2: Today you will continue working on composing your own Leitmotiv. Before we continue, let's review what a Leitmotiv is! Write a good definition of a "leitmotiv" in the space below:

Last week you practiced writing notes on a staff then you began experimenting with notes to create a melody for your own Leitmotiv. Take a look at what you wrote last week. (You should have last week's worksheets now to look at them).

When we learned to write notes, we only focused on the natural notes (i.e. the white notes on the piano). They looked like this:



There are 7 different notes (C, D, E, F, G, A, B), then the pattern starts over again. There are certainly plenty of notes here to create a melody, however it is not all the notes. As you compose your melody, you may find that you want to use some of the black notes to make your melody sound better or to create interest and variety.

These notes can be used by adding a flat or a sharp to any note. For example, you can go to the black key above C by adding a sharp sign that looks like this # to the C.

It would look like this: **C#**

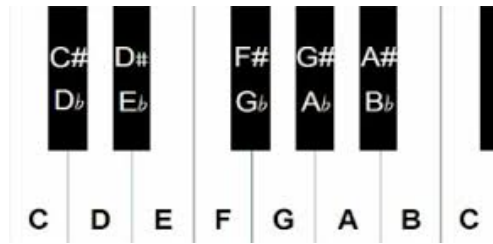
And would be this note on the piano:



The exact same note can be played by adding a Flat Sign to the D!

It would look like this: **D^b**

All the black notes on the piano can have a Sharp name or a Flat name. Here is a piano keyboard showing all the black notes with both names:

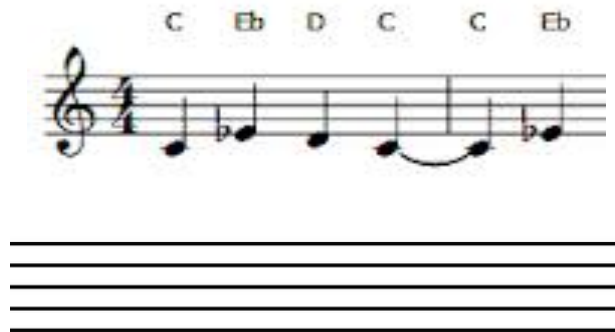


On a treble clef staff, they look like this for a C:



Notice the last note returns the C to the Natural C by using a Natural Sign. You only need to use the Natural sign to “return” the note to the original white key if you used a Flat or Sharp sign. Otherwise, it is understood that the note is Natural (and the performer will use the white key for that note you wrote).

Lets practice using some flats and sharps. On the blank staff at the bottom, copy the music you see below to practice using some flats:



Notice that the flat is placed just before the note it changes. Sharps work the same way.

Now, let’s practice the melody you wrote last week. Take time to play what you wrote. Decide on the portions you want to keep and rewrite them on the staff on the next page.

If you want to start over, use the next page as well to get some thoughts down. This is still a rough draft of your music. It is OK to write down notes and later decide not to use them. Try to write down any combination of notes you like so you will remember them next week.

Also, experiment with flats and sharps to see if you like the sound in your melody.

Use the space below to rewrite the melody from last week keeping the melodies you like. You will use this to remind yourself next week about your melody and to continue working towards your final Leitmotiv:

